



powered by  
**productronica**

Organizer of the international pavilion



LLC «CTT Expo»

Messe München

**XVIII INTERNATIONAL EXHIBITION**

# **ELECTRONICS & INSTRUMENTATION**

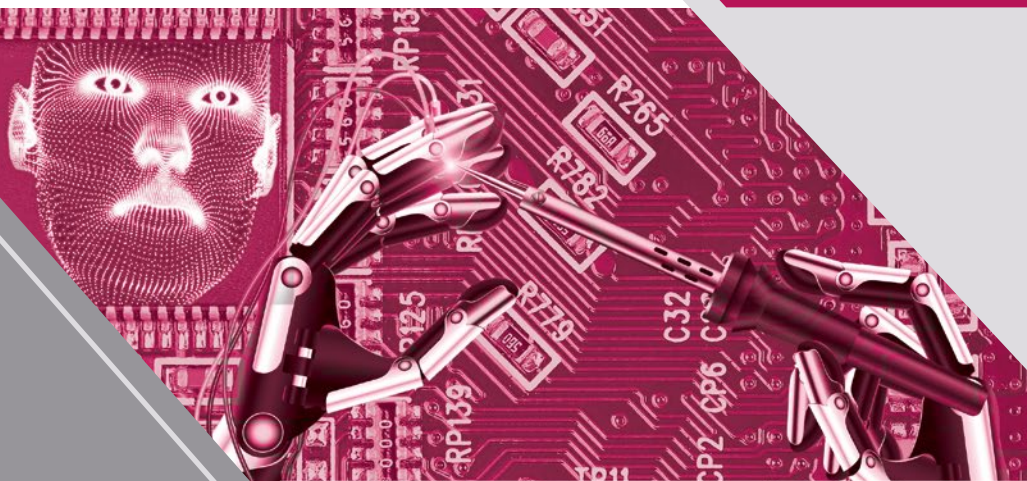
**Radel**

Organizer:



**Saint-Petersburg  
CEC EXPOFORUM  
18-20 September 2018**

**SMART  
COMPONENTS  
NEW  
TECHNOLOGIES**





## Biggest regional exhibition in Russia

### ELECTRONICS & INSTRUMENTATION-2018 (RADEL)

invite you to represent your product, technologies and processes for mainstream audience of professionals from various lines of industry



6000 VISITORS DURING 3 DAYS

Including specialists from 167 cities of Russia and abroad

UNIQUE QUALITY OF VISITORS

72% - representatives of projecting, designing and manufacturing companies

GOOD TIME AND PLACE TO GET NEW CONTACTS

New opportunities for partnership due to reference of supply restriction

#### MOST PERSPECTIVE COMMUNITYS, WHERE ELECTRONICS IS MOST-COVETED\* :

MOTOR-CAR CONSTRUCTION • AIRPOWER, SPACE • MEDICINE  
• PRODUCTION SYSTEMS • INFORMATION SECURITY  
• DEFENSE INDUSTRY •

NEW! **ROBOTOTRONICS** • NEW! **ARTIFICIAL INTELLIGENCE**

\*according to exhibition guests inquiry statistics

RADEL exhibition - is a unique event, where top-management, engineers and developers can meet recent achievements and tendencies of electronics, get modern ideas, creative impulse and instruments for using them.



#### EXHIBITION PROFILE:

- PASSIVE COMPONENTS
- SEMICONDUCTOR ELEMENTS
- EMBEDDED SYSTEMS
- SENSORS
- EXECUTIVE COMPONENTS
- IMAGING AND DISPLAY DEVICES
- PC BOARDS AND OTHERS WIRING CARRIERS
- PRINTED-CIRCUIT DESIGN PROGRAMMS
- CAD PROGRAMMS
- MICROCONTROLLER PROGRAMMING
- WIRELESS TECHNOLOGYS
- SENSING TECHNOLOGYS
- POWER SUPPLY SOURCES
- MICRO- AND NANOSYSTEMS
- MEASUREMENT EQUIPMENT AND SYSTEMS
- ELECTRICAL CONNECTORS
- ELECTRONICS RESEARCHING AND MANUFACTURING
- LIGHT ENGINEERING LED/SSL
- ROBOTOTRONICS

# Radel 2017

## Exhibitors quantity by key industries

Electronic components  
and parts **46**

Industrial environment  
and materials **46**

Semiconductors **35**

Sensors and executive  
components **31**

Micro- and nanosystems **15**

Display devices **6**

Power supply sources **18**

Microelectromechanical  
systems **13**

Wireless communication  
modules and components **5**

Commutation and joining  
components **33**

Production for purpose-built  
electronics engineering **32**

Passive components **16**

PC boards and others wiring  
carriers **17**

**150** companies  
from 10 countries:

Russia, USA, China,  
Germany, Belarus,  
Serbia, etc..

*Benefits of partnership*

Measurement  
and test devices **24**

Pieces of technology **14**

Software support **10**

Light engineering **27**

Contract manufacturing **20**

## EXHIBITORS

 **ROHDE & SCHWARZ**

 **LionTech**

 **Клевор  
Электроникс**


 **KEYSIGHT  
TECHNOLOGIES**

 **ProSOFT®  
COMPONENTS**

 **TESON®**

 **МИКРАН**

 **AVIV GROUP**  
AVIV GROUP COMPANY

 **HKT** Новые Компоненты и Технологии

 **SERSTEK**



 **ПЛАТАН  
БАЛТИКА**

 **ostec**  
корпусы

 **SOVTEST**  
ВАШ ПАРТНЕР ПО КАЧЕСТВУ

 **edyus**

 **МИПАНДОР**  
Группа компаний

 **FE АЛЕКСАНДЕР  
ЭЛЕКТРИК**  
ИСТОЧНИК ЭЛЕКТРОПИТАНИЯ

 **А-КОНТРАКТ**

 **АВАНТЕХ**

 **ПРИСТ®**



 **ОКБ-ПЛАНЕТА**  
ОТКРЫТОЕ АКЦИОНЕРНОЕ ОБЩЕСТВО



 **РССП**

# Radel



powered by  
**productronica**

The exhibition **Radel-2018** will be held jointly by the world famous **productronica** (Messe München)

Using the global network of Messe München, information about the exhibition will be distributed by representative network Messe München in many countries of the world

**Radel-2018** is organized in accordance with the high standards of **productronica** (Messe München)

The business program of the exhibition is strengthened with speeches by European experts of the highest level on the most relevant topics

The technically advanced format of the exhibition is tailored for executives, developers and decision-making engineers

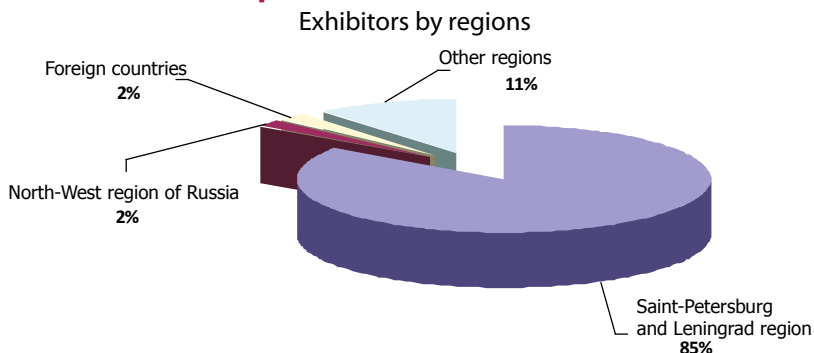
The geographical composition of visitors of the exhibition is significantly expanded, including foreign visitors

*Benefits of partnership*



## VISITORS

**More than 6000 specialists visit Radel exhibition in 2017.**



### Business activity

Establishment operations	Responsibility number	Composition in percent
Development / Intercalation	2227	24,7 %
Engineering	1912	21,2 %
Production	2330	26,0 %
Distribution	1125	12,5 %
Science, education	730	8,1 %
Systems integration	361	4,1 %
Consultancy	101	1,1 %
Safety and security	144	1,6 %
Mass Media	27	0,3 %
Other	41	0,5 %

Specialists from the following branches visit the exhibition: airplane engineering, defence complex, building industry, housing and public utilities, logistics, medicine, education, radiomonitoring, repair contractors, reequipment, certification, geology, telecommunications.





**EXPOFORUM** - the newest congress and exhibition center in St. Petersburg, has build in confluence **with Global Association of the Exhibition Industry (UFI) framework.** It is the most cutting-edge venue of its kind anywhere in Russia or Europe.

### Complex includes:

- Three exhibition pavilions up to **50000 sq. m gross**
- Conference center - total capacity **10 000 people (35 convention halls)**
- Business center
- Custom-logistics service

### For visitors:

- **HILTON** hotel
- **Free parking** for **4700 parking spaces**
- Cafes, restaurants, comfortable halls and other items of related infrastructure
- **Smart ground**
- **Free WiFi zones**

---

### Organizers:



Tel. +7 (812) 718-35-37  
E-mail: [radel2@fareexpo.ru](mailto:radel2@fareexpo.ru)  
[www.fareexpo.ru](http://www.fareexpo.ru)



Messe München

LLC «CTT Expo»  
Tel. +7 (495) 961-22-62  
E-mail: [e.martynova@ctt-expo.ru](mailto:e.martynova@ctt-expo.ru)